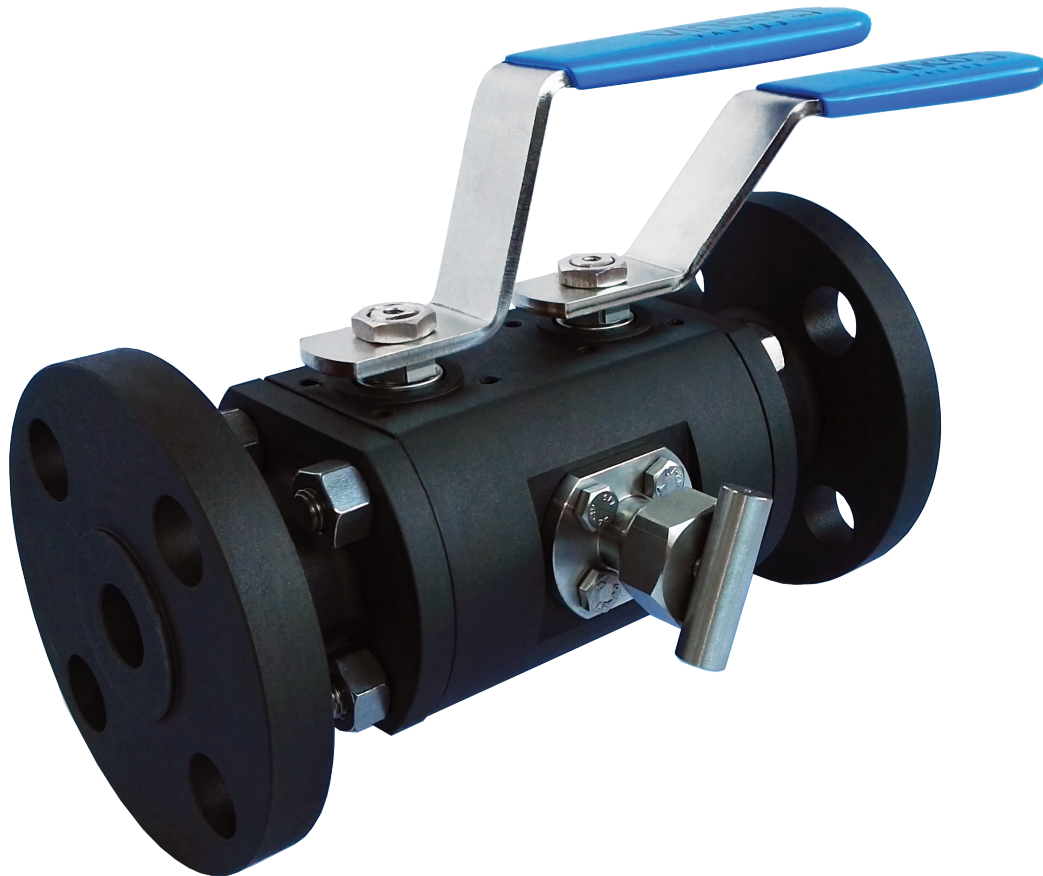




DOUBLE BLOCK AND BLEED

DESIGN FIRE-SAFE RANGE



Fugitive Emissions
ISO 15848



CE Marking
PED 97/23/EC



ATEX II 2 GD
94/9/EC




Fire Safe
ISO 10497 and API 607 Ed.6



Vinco has been supplying some of the most demanding end customers for more than 15 years. Some examples:



All trademarks and registered trademarks are the property of their respective owners

CERTIFICATION	CONSTRUCTION STANDARDS	TEST STANDARDS
<p>CE Certification acc. to PED 97/23/EC</p> <p>ATEX II 2GD Certification acc. to 94/9/EC</p> <p>Company Quality System Certified acc. to ISO 9001</p> <p>Fugitive Emissions Class B acc. to ISO 15848 and TA-LUFT (VDI 2440:2000)</p> <p></p>	<p>ASME B16.34</p> <p>ISO 17292</p> <p>API 6D / ISO 14313</p> <p>NBR 15827</p> <p>MSS-SP-25</p> <p>ISO 5211</p> <p>ISO 10497 / ISO API 607 Ed.6</p> <p>ISO 15848</p>	<p>All valves with <i>resilient seats</i>, are tested acc. to: EN 12266-1 Rate A and API 598 / ISO 5208.</p> <p>All valves with <i>metallic seats</i>, are tested acc. to: EN 12266-1 Rate A to D.</p> <p>All valves can be tested acc. to API 6D under request.</p> <p>TESTS APPLIED:</p> <ul style="list-style-type: none"> Hydrostatic and Pneumatic <p>For all valves is issued certificate as: EN 10204 type 3.1</p> <p>Certification acc. to EN 10204 type 3.2 is available on request.</p>

STANDARD SEATS

CI150 (300 psi)
to
CI2500 (6000 psi)

3 Pieces Bolted - FLOATING

DF Series

Body / Connections Material : CARBON ST. A350 LF2 ; A105N
STAINLESS ST. A182 F316-316L ; A182 F304-304L

Ball Material : A182 F316-316L ; A351 CF8M ; A182 F304-304L

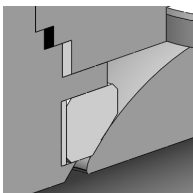
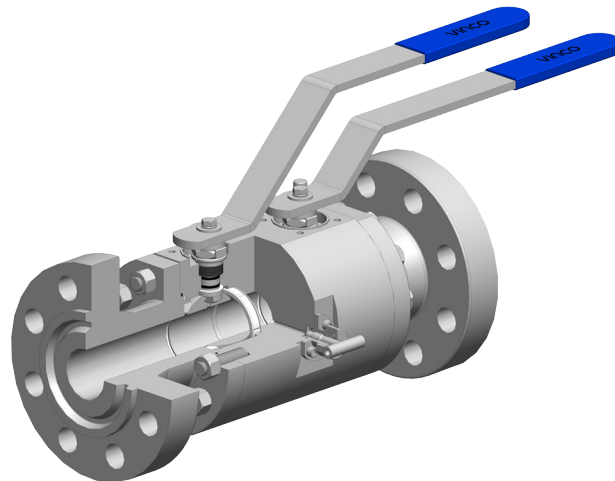
Stem Material : A182 F316-316L ; A182 F304-304L ; 17-4 PH

Seat Material : CG-RPTFE, DEVLON, PEEK, PEEK Mod.

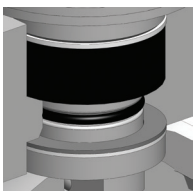
Options:

A350 LF3 ; A182 F321 (UNS S32100) ; A182 F44 (UNS S31254) ; Duplex A182 F51 (UNS S31803); Super Duplex A182 F55 (UNS S32760)

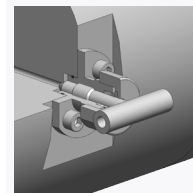
Other materials for Body / Connections, Ball, Stem and Seats on request



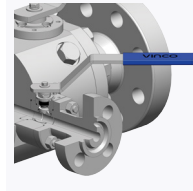
- Metal backup seat for sealing in the event of a fire
- Encapsulated graphite body seals for extra resistance



- Live loaded packing self adjust ensures longer service without maintenance
- Anti-blowout stem
- Electrical conductivity is ensured between body, ball and ends acc. ATEX (94/9/CE)



- Needle Bleed Valve



- Floating Bleed Valve

Other Features:

- ISO 5211 mounting flange
- Pressure relieving seats for body cavity pressure relieving with valve closed position
- Ball relief hole to equalize different pressures inside the body when the valve is open position
- Actuation at 90° handle, handwheel or actuator. Lockable lever as option

Connections:

- Threaded BSP/BSPP- BSPT- NPT Ends
- Butt weld and Butt weld Nipple (Sch.10 to XXS) Ends
- Socket weld and Socket weld Nipple Ends
- Flanged RF & RTJ Ends

STANDARD SEATS

CI150 (300 psi)
to
CI2500 (6000 psi)

3 Pieces Bolted - TRUNNION

DTR Series

Body / Connections Material : CARBON ST. A350 LF2 ; A105N
STAINLESS ST. A182 F316-316L ; A182 F304-304L

Ball Material : A182 F316-316L ; A182 F304-304L

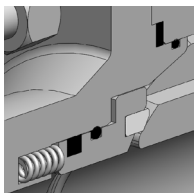
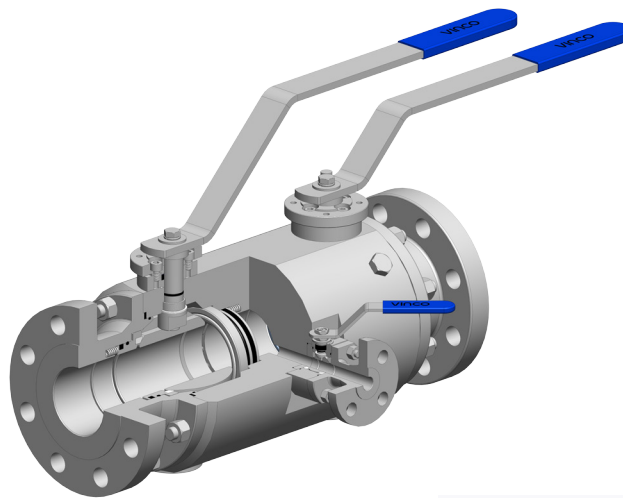
Stem Material : A182 F316-316L ; A182 F304-304L ; 17-4 PH

Seat Material : CG-RPTFE, DEVLON, PEEK, PEEK Mod.

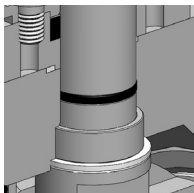
Options:

A350 LF3 ; A182 F321 (UNS S32100) ; A182 F44 (UNS S31254) ; Duplex A182 F51 (UNS S31803); Super Duplex A182 F55 (UNS S32760)

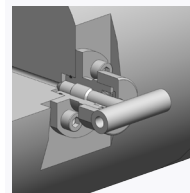
Other materials for Body / Connections, Ball, Stem and Seats on request



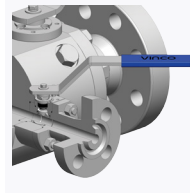
- Metal backup seat for sealing in the event of a fire
- Encapsulated graphite body seals for extra resistance



- Live loaded packing self adjust ensures longer service without maintenance
- Anti-blowout stem
- Electrical conductivity is ensured between body, ball and ends acc. ATEX (94/9/CE)



- Needle Bleed Valve



- Floating Bleed Valve

Other Features:

- ISO 5211 mounting flange
- Pressure relieving seats for body cavity pressure relieving with valve closed position
- Ball relief hole to equalize different pressures inside the body when the valve is open position
- Actuation at 90° handle, handwheel or actuator. Lockable lever as option

Connections:

- Butt weld Nipple (Sch.10 to XXS) Ends
- Socket weld Nipple Ends
- Flanged RF & RTJ Ends

METAL SEATS

CI150 (300 psi)
to
CI2500 (6000 psi)

3 Pieces Bolted - FLOATING

DFM Series

Body / Connections Material : CARBON ST. A350 LF2 ; A105N

STAINLESS ST. A182 F316-316L ; A182 F304-304L

Ball Material : A182 F316-316L ; A351 CF8M ; A182 F304-304L

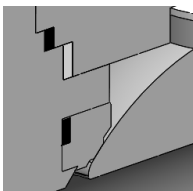
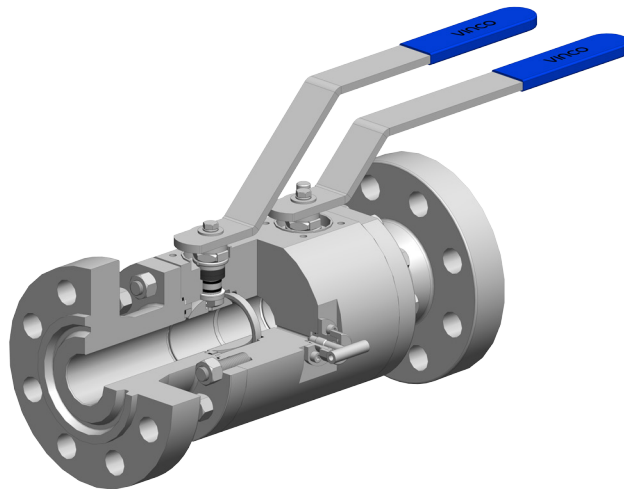
Stem Material : A182 F316-316L ; A182 F304-304L ; 17-4 PH

Seat Material : A182 F316-316L ; A182 F304-304L

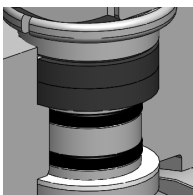
Options:

A350 LF3 ; A182 F321 (UNS S32100) ; A182 F44 (UNS S31254) ; Duplex A182 F51 (UNS S31803); Super Duplex A182 F55 (UNS S32760)

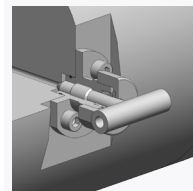
Other materials for Body / Connections, Ball, Stem and Seats on request



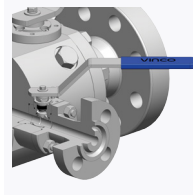
- Metal backup seat for sealing in the event of a fire
- Encapsulated graphite body seals for extra resistance



- Live loaded packing self adjust ensures longer service without maintenance
- Anti-blowout stem
- Electrical conductivity is ensured between body, ball and ends acc. ATEX (94/9/CE)



- Needle Bleed Valve



- Floating Bleed Valve

Other Features:

- ISO 5211 mounting flange
- Pressure relieving seats for body cavity pressure relieving with valve closed position
- Ball relief hole to equalize different pressures inside the body when the valve is open position
- Actuation at 90° handle, handwheel or actuator. Lockable lever as option

Connections:

- Threaded BSP/BSPP- BSPT- NPT Ends
- Butt weld and Butt weld Nipple (Sch.10 to XXS) Ends
- Socket weld and Socket weld Nipple Ends
- Flanged RF & RTJ Ends

3 Pieces Bolted - TRUNNION

DTM Series

METAL SEATS

CI150 (300 psi)
to
CI2500 (6000 psi)

Body / Connections Material : CARBON ST. A350 LF2 ; A105N

STAINLESS ST. A182 F316-316L ; A182 F304-304L

Ball Material : A182 F316-316L ; A182 F304-304L

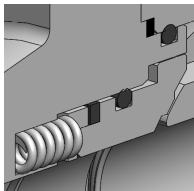
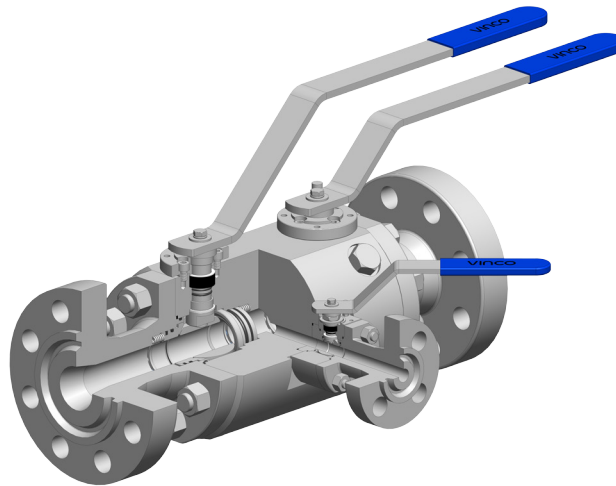
Stem Material : A182 F316-316L ; A182 F304-304L ; 17-4 PH

Seat Material : A182 F316-316L ; A182 F304-304L

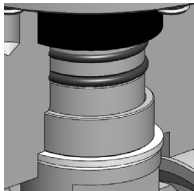
Options:

A350 LF3 ; A182 F321 (UNS S32100) ; A182 F44 (UNS S31254) ; Duplex A182 F51 (UNS S31803); Super Duplex A182 F55 (UNS S32760)

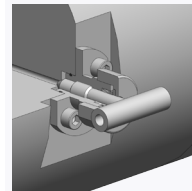
Other materials for Body / Connections, Ball, Stem and Seats on request



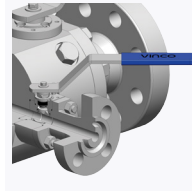
- Metal backup seat for sealing in the event of a fire
- Encapsulated graphite body seals for extra resistance



- Live loaded packing self adjust ensures longer service without maintenance
- Anti-blowout stem
- Electrical conductivity is ensured between body, ball and ends acc. ATEX (94/9/CE)



- Needle Bleed Valve



- Floating Bleed Valve

Other Features:

- ISO 5211 mounting flange
- Pressure relieving seats for body cavity pressure relieving with valve closed position
- Ball relief hole to equalize different pressures inside the body when the valve is open position
- Actuation at 90° handle, handwheel or actuator. Lockable lever as option

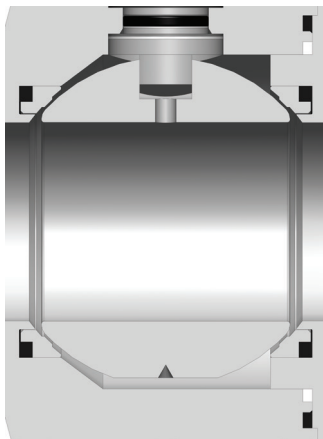
Connections:

- Buttweld Nipple (Sch.10 to XXS) Ends
- Socketweld Nipple Ends
- Flanged RF & RTJ Ends

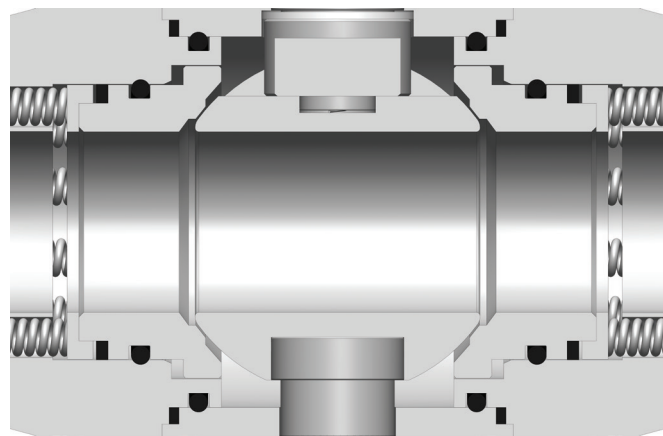
Metal Seats

Metal seats valves are designed for applications requiring resistance to erosion, abrasion, corrosion and high temperatures beyond the capabilities of the currently available polymeric seat materials.

Metal seat and ball are TCC coated (Tungsten Carbide Coating)



Design Metal Seats
FLOATING



Design Metal Seats
TRUNNION



Rua do Progresso, lotes 15
4760-841 Vilarinho das Cambas
V.N. Famalicão - Portugal

Tel: +351 252 303 210
www.vincovalves.com
comercial@vincovalves.com