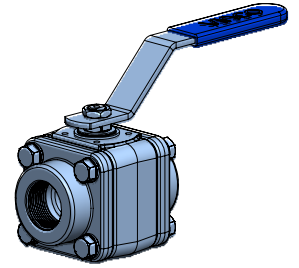




SF SERIES
FIRE SAFE - ATEX
FULL BORE
CI800 - DN 10 ÷ 40 (3/8" ÷ 1 1/2")
THREADED ENDS (BSP-BSPT-NPT)

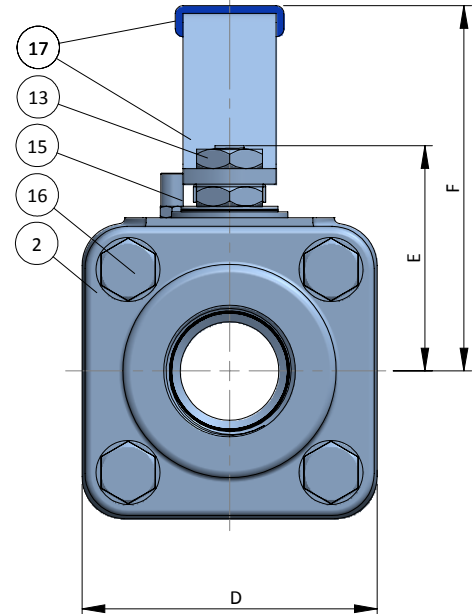
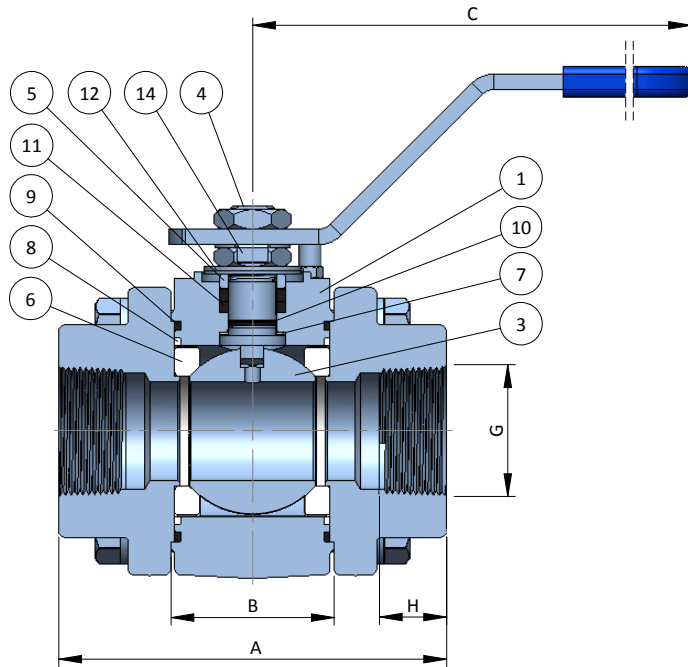


SF2F1DDA3

A105N - LF2 • CG-RPTFE

SF2F1DDA4

A105N - LF2 • PEEK



Part	Quant.	Description	Materials
1	1	Body	A105N-LF2
2	2	End	A105N-LF2
3	1	Ball	F316/CF8M
4	1	Stem	A182 F316-316L 17-4 PH
5	1	Gland Packing	A182 F316-316L
6	2	Seat	CG-RPTFE PEEK
7	2	Stem Thrust Seal	CG-RPTFE + PEEK
8	2	1 st Body Seal	CG-RPTFE
9	2	2 nd Body Seal	GRAPHITE
10	1	O'Ring	VITON
11	1	Stem Packing Set	GRAPHITE + PEEK
12	2	Disc Spring	STAINLESS ST. 316
13	2	Stem Nut	STAINLESS ST. 304
14	1	Locking Clip	STAINLESS ST. 304
15	1	Stop Pin	STAINLESS ST. 304
16	8	Bolt	A193 Gr. B7 ZINC.
17	1	Handle	CARBON ST. ZINC. / VINYL

DN		Dimensions									ISO 5211	Weight Approx. Kg
mm	inch	BALL PORT	A	B	C	D	E	F	G	H		
10	3/8"	11.9	70	26	140	70	41	67	BSP BSPT NPT	10.4	F03	-
15	1/2"	15.1	75	30	140	75	44	70		13.6	F03	-
20	3/4"	19.1	90	34	170	90	53	88		13.9	F04	-
25	1"	25.4	100	42	170	100	58	93		17.3	F04	-
32	1 1/4"	31.8	115	50	200	110	69	113		18	F05	-
40	1 1/2"	38.1	125	58	200	125	76	118		18.4	F05	-