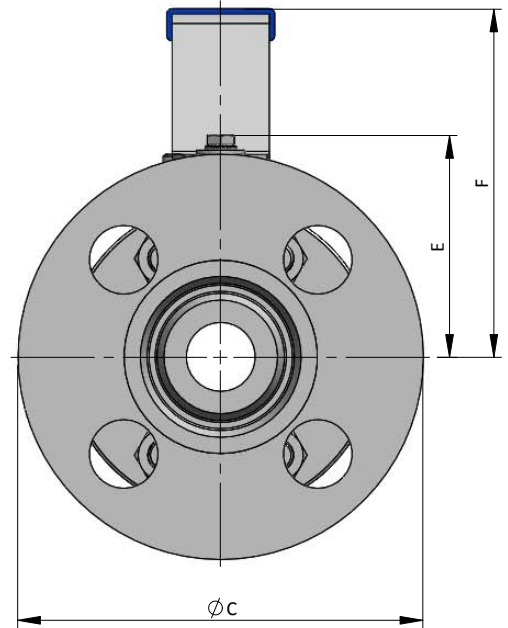
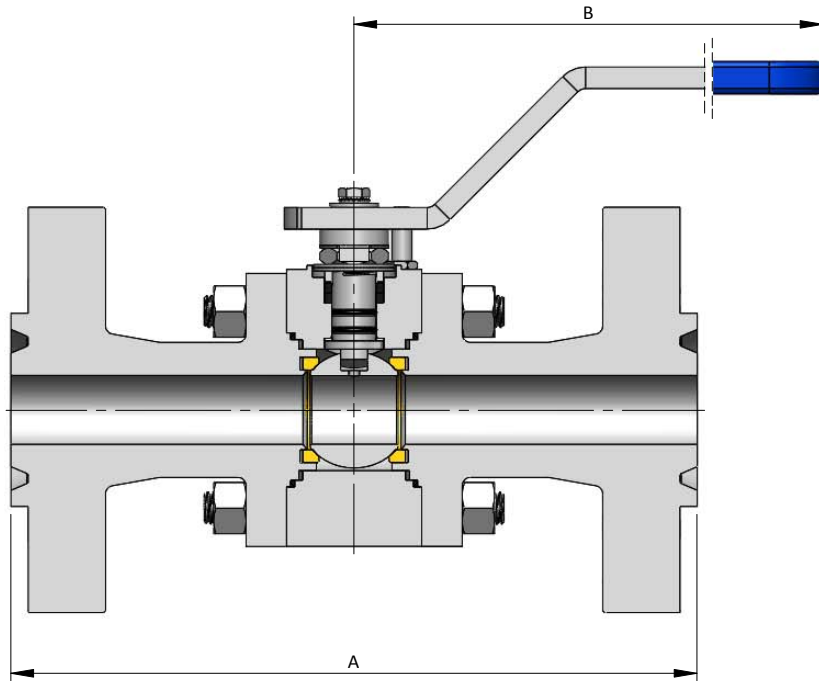
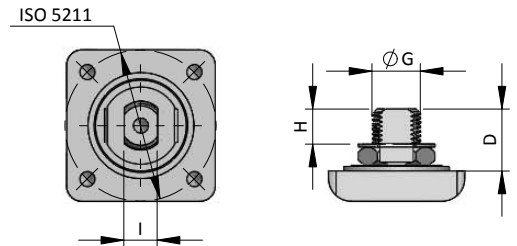


DS: HF3-F1JF6

STAINLESS STEEL F316-316L VERSION



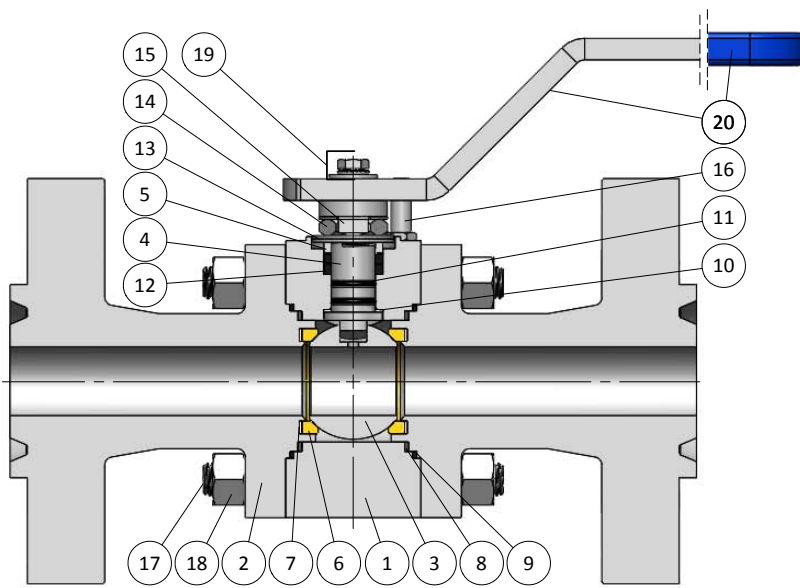
Flanged Ends
RTJ according to ASME B16.5



DN / Size		Dimensions							Automation					Cv	Weight Approx. [Kg]	
FULL BORE		Ball Port	A	B	C	D	E	F	G	H	I	ISO 5211	BTO* [Nm]			MAST [Nm]
mm	inch															
15	½"	15.1	216	230	120	16.5	58	97	12	8.5	7.5	F04	14	87	13	7.5
20	¾"	20.6	229	230	130	14.0	61	100	12	8.5	7.5	F04	28	87	27	10.0
25	1"	25.4	254	350	150	20.5	82	127	16	11.5	11.0	F05	37	248	41	16.0
32	1¼"	31.8	279	350	160	16.5	87	132	16	11.5	11.0	F05	70	248	77	20.5
40	1½"	38.1	305	420	180	27.0	107	149	20	12.5	14.0	F07	95	514	96	29.0
50	2"	49.0	371	420	215	21.0	114	157	20	12.5	14.0	F07	120	514	162	48.0

*BTO - Break to Open Torque at full differential pressure

STAINLESS STEEL F316-316L VERSION

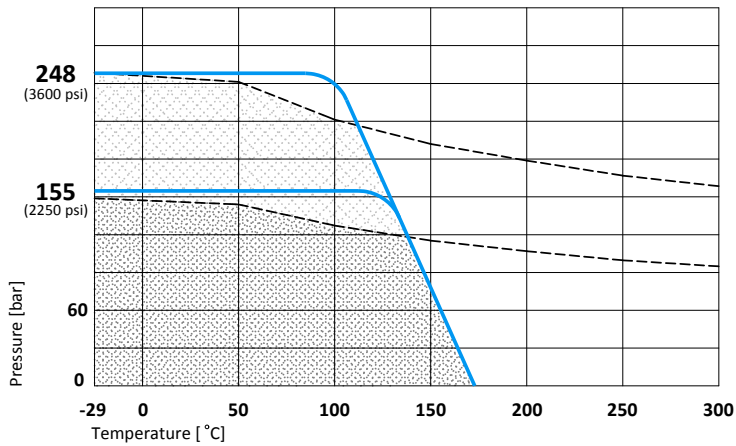


Part	Qt.	Description	Materials
1	1	Body	A182 F316-316L
2	2	End	A182 F316-316L
3	1	Ball	F316/CF8M
4	1	Stem	17-4 PH
5	1	Gland Packing	A182 F316-316L
6	2	Seat	DEVLON
7	2	Seat Support	PTFE
8	2	1 st Body Seal	CG-RPTFE
9	2	2 nd Body Seal	GRAPHITE
10	1	Stem Thrust Seal	PEEK
11	1/2	O'Ring	VITON
12	1	Stem Packing Set	GRAPHITE + PEEK
13	2/1	Disc Spring	STAINLESS ST. 316
14	1	Stem Nut	STAINLESS ST. 316
15	1	Locking Clip	STAINLESS ST. 316
16	1	Stop Pin	STAINLESS ST. 304
17	-	Stud	A193 Gr. B8M Cl.2
18	-	Nut	A194 Gr. 8M
19	1	Handle Fastener	STAINLESS ST. 304
20	1	Handle	CARBON ST. ZINC. / VINYL

↳ TYPICAL SPARE PARTS

Pressure - Temperature Rating

— DEVLON Seats - - - - - A182 F316-316L Body



Seat Options

Material	mOT* [°C]	MOT* [°C]
DEVLON	-29	170
PEEK	-29	280

*mOT - minimum Operating Temperature
*MOT - Maximum Operating Temperature at 10 bar

	DN	Rating
1	DN 15 to 50 FB	248 bar / 3600 psi
2	DN 15 to 50 FB	155 bar / 2250 psi

CERTIFICATION	CONSTRUCTION STANDARDS	TEST STANDARDS
CE Certification acc. to PED 2014/68/EU Fire Safe acc. to API 607 Ed.6 to ISO 10497 ATEX II 2GD Certification acc. to 2014/34/EU Company Quality System Certified acc. to ISO 9001	ASME B16.34 ISO 17292 MSS-SP-25 ISO 5211	All valves with <i>resilient seats</i> , are tested acc. to: EN 12266-1 Rate A and API 598 / ISO 5208. TESTS APPLIED: Hydrostatic and Pneumatic EN 10204 type 3.1 Certificate available for every valve