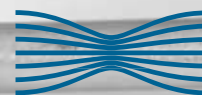




# INTERCEPTION STERIVALVE

## INTERCEPTION

- OF PRODUCT FLOW ON CONTAINERS
- OF PRODUCT FLOW ON HOPPERS
- OF PRODUCT FLOW ON PIPES



**STERIVALVES**  
Process Advantage

## STERIVALVE BUTTERFLY VALVE



**Sterivalve** is a sanitary butterfly valve designed to intercept bulk solid products (powders, granules, etc) flow.

**SECTORS:** pharmaceutical, API, chemical, nutraceutical, food and nuclear industries.  
**FIELDS OF APPLICATION:** interception of products flow on containers, hoppers and pipes.

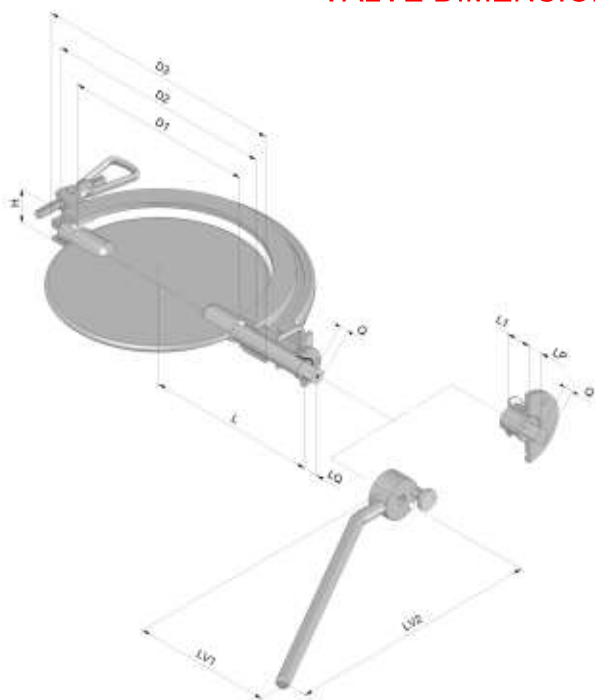
### FEATURES, AUTOMATION AND DOCUMENTATIONS

Valve Body and vane Materials	Finishing	Gasket Material	Connections
Stainless Steel EN 1.4404 (AISI 316L)	Parts in contact with product: Ra<0,5µm. Other parts: Ra<1,2µm	Translucent silicone	Machined-out spigot H=15mm; thickness 3 mm
Hastelloy ® C22/C276		USP Class VI Silicone	
Covering of parts in contact with fluorine resins (e.g. PFA, FEP)	Welds: completely grounded and polished	White EPDM	BS4825-3 Tri-Clamp H=15mm
		Antistatic EPDM (black)	DIN 32676 Reihe A, B or C, Tri-Clamp H=15mm
Low δ-ferrite Stainless Steel	Electropolishing upon request	FKM	ISO 2582 Tri-Clamp H=15mm
Other types of stainless steel and resins available upon request	Picking and passivation	PTFE	Connection flange for SteriFlange and aseptic gasket
	Other finishing upon request		Connection for Steriflange with Bayonet system: to facilitate the SteriFlange mounting

Opening	Support Style	Control System	Certificates and Declarations
Hand Lever	Actuator support	Inductive sensor switches	Material certificate EN 10204-3.1 for metallic parts
Semiautomatic Push & Turn Lever	Multifunctional support with quick release (standard up to ND 300 mm)	Position cam	
Quarter turn gearbox, manually or automatically operated		Integrated support with clamp	Electropneumatic or pneumatic positioner
Anodised aluminium pneumatic actuator single or double effect	Docking system: automatic valve-opening system that can be placed on a discharge station	Solenoid valve, 5/2 or 3/2 type	CE declaration of incorporation as per Directive 2006/42/EC
Stainless steel aluminium pneumatic actuator single or double effect		PLC Control Panel	Torque Measurement Test
SteriBox: stainless steel enclosure for actuator			Gas tightness test to EN12266-1, test P12
			USP class VI biocompatibility declaration (*)
			Traceability report (*)
			Roughness test map (*)
			ATEX 2014/34 /EU (*)
			PED certificate (*)
			Free BSE/TSE declaration for elastomers (*)
			Free bisphenols declaration for elastomers (*)

(\*) Documentation available upon request

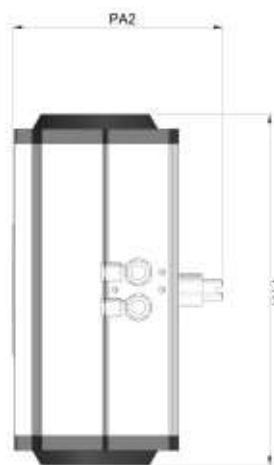
## VALVE DIMENSIONS [mm] AND WEIGHT [kg]



D1	D2	D3	H	L	Q	LQ	LP	LV1	LV2	WEIGHT
80	130	145	36	120	11	12	12	121	229	3
100	150	180	36	130	11	12	12	121	229	5
150	200	230	40	165	14	16	16	161	300	6
200	250	280	40	190	14	16	16	161	300	8
250	300	330	45	225	17	20	20	183	339	13
300	350	380	45	250	17	20	20	183	339	18
350	420	450	65	290	22	24	24	254	460	33
400	470	500	65	315	22	24	24	254	460	38

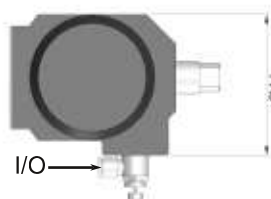
## PNEUMATIC ACTUATOR DIMENSIONS AND SUPPORT FLANGE TYPE (ISO 5211)

### DOUBLE ACTING



Actuator Flange	Silicone Gasket						EPDM/PTFE/FKM Gasket					
	PA1 [mm]	PA2 [mm]	PA3 [mm]	I/O Ø [mm]	Weight [kg]	ND [mm]	Actuator Flange	PA1 [mm]	PA2 [mm]	PA3 [mm]	I/O Ø [mm]	Weight [kg]
F04	165	120	85	6	2	80	F04	165	120	85	6	2
F04	165	120	85	6	2	100	F05/F07	177	120	96	6	3
F05/F07	177	142	96	6	3	150	F05/F07	239	142	113	6	4
F05/F07	239	142	96	6	4	200	F07/F10	230	142	113	6	5
F05/F07	230	161	113	6	5	250	F07/F10	246	161	138	8	8
F07/F10	246	195	113	8	8	300	F07/F10	290	195	138	8	9
F07/F10	246	195	113	8	9	350	F07/F10	290	195	113	8	9
F07/F10	290	195	138	8	13	400	F07/F10	351	195	151	8	13

### SPRING RETURN



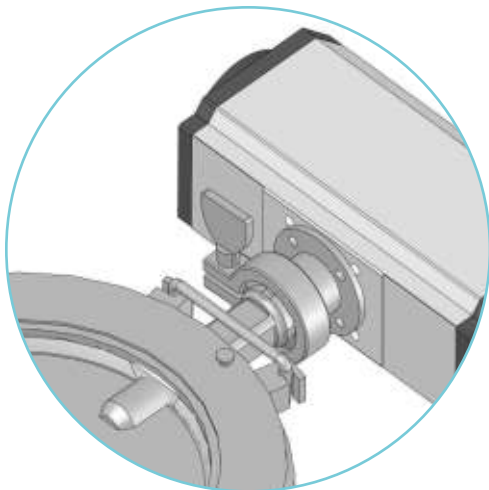
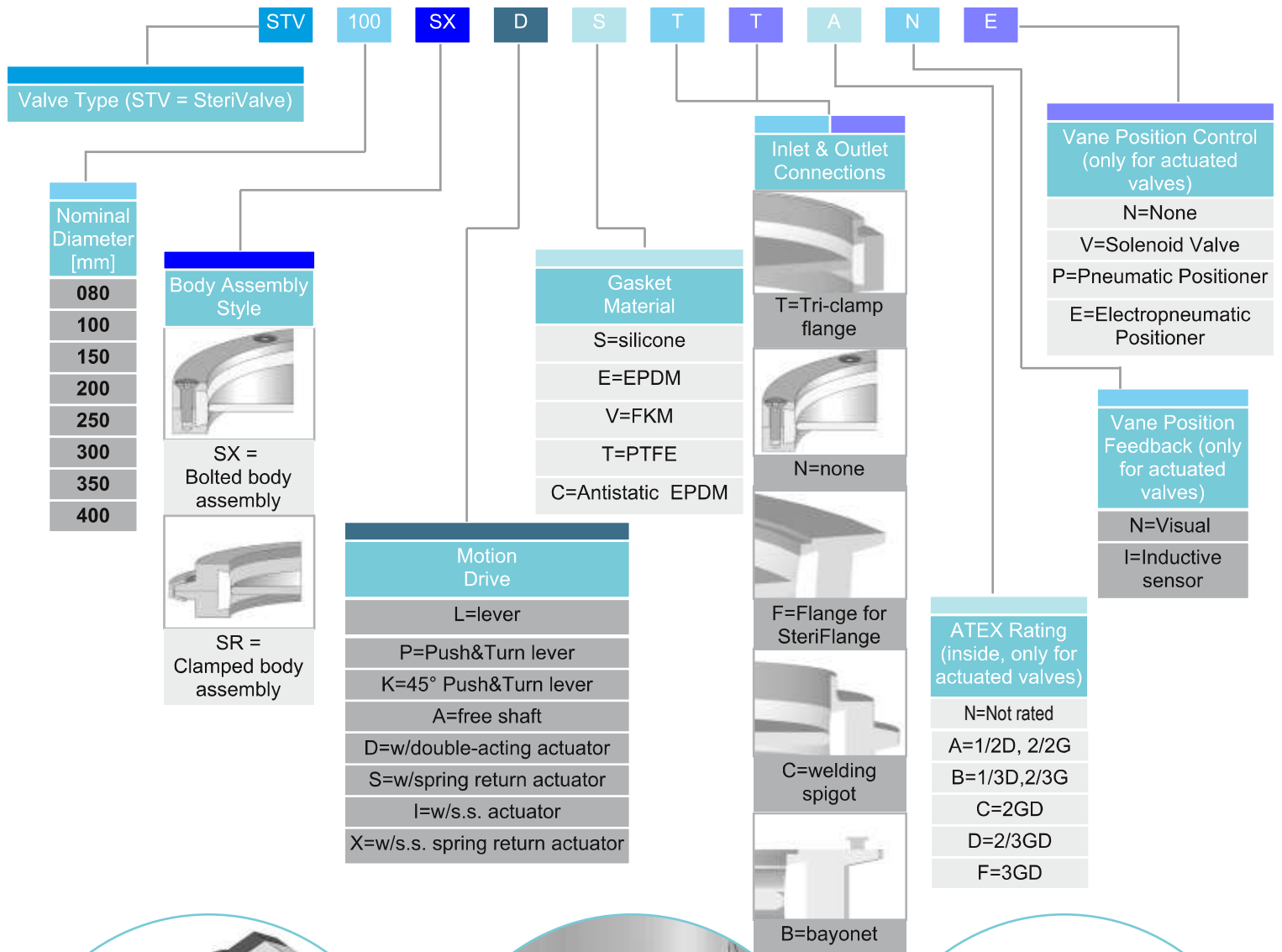
Actuator Flange	Silicone Gasket						EPDM/PTFE/FKM Gasket					
	PA1 [mm]	PA2 [mm]	PA3 [mm]	I/O Ø [mm]	Weight [kg]	ND [mm]	Actuator Flange	PA1 [mm]	PA2 [mm]	PA3 [mm]	I/O Ø [mm]	Weight [kg]
F04	177	142	96	6	4	80	F05/F07	239	142	96	6	5
F05/F07	239	142	96	6	5	100	F05/F07	230	161	113	6	6
F05/F07	230	161	113	6	6	150	F07/F10	246	195	113	8	9
F07/F10	246	195	113	8	9	200	F07/F10	290	195	138	8	11
F07/F10	290	195	138	8	11	250	F07/F10	351	208	151	8	15

## FUNCTIONAL PARAMETERS

ND [mm]	Tightness Test [barg]	Max working speed		Nominal Torque Rating [Nm]		Expected gasket max. working life [Cycles]	
		[Cycles/min]	[m/s]	Silicone gasket	EPDM, PTFE, FKM gasket	Silicone gasket	EPDM, PTFE, FKM gasket
		80	3,0	35	0,14	22	25
100	3,0	35	0,18	28	30	20'000	15'000
150	2,0	25	0,19	50	55	20'000	15'000
200	1,5	20	0,20	65	90	20'000	15'000
250	1,0	14	0,18	110	130	20'000	15'000
300	0,5	10	0,15	130	165	20'000	15'000
350	0,3	10	0,18	165	200	20'000	15'000
400	0,3	8	0,16	220	240	20'000	15'000

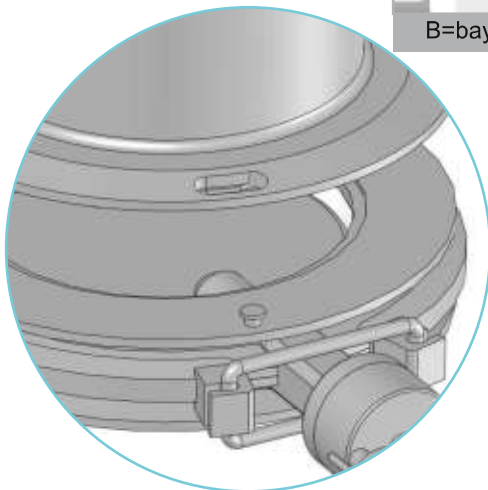
The gas tightness test is carried out according to EN12266-1 norm, test P12, on all the valve types except for the PTFE gasket valves. The PTFE gasket is guaranteed to be dust tight. Please contact us for more information.

# VALVE CONFIGURATION



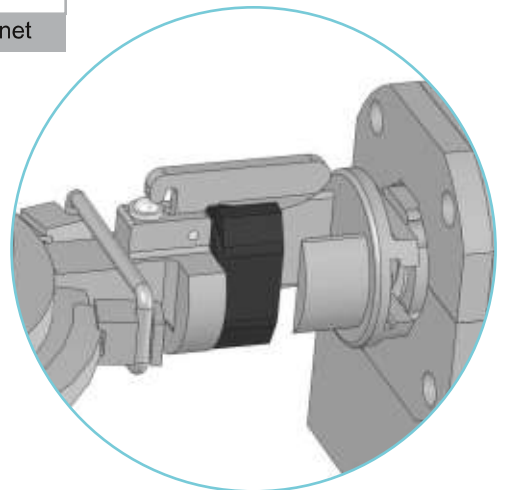
**Figure 1: Quick Release System**

The valve is connected to the actuator by means of a clamp. Once the valve is unclamped it can be easily removed. See all the details on YouTube



**Figure 2: Bayonet Connection**

The valve is equipped with pins that have the corresponding slots on the counter-flange. The valve can be easily mounted even by a single operator. The connection is secured by means of a clamp (not shown).



**Figure 3: Docking System**

The valve shaft has a wedge that is connected to the actuator by means of a wedge-fork type connection. The actuator stands fixed and the valve is free to move around mounted on a container, or a hopper.

## ATEX ZONE CLASSIFICATION/VALVE CATEGORY

Working temperature range:  $-20\text{ °C} < T_a < +60\text{ °C}$

Gas class: IIB

MIE Powder  $> 1\text{ mJ}$

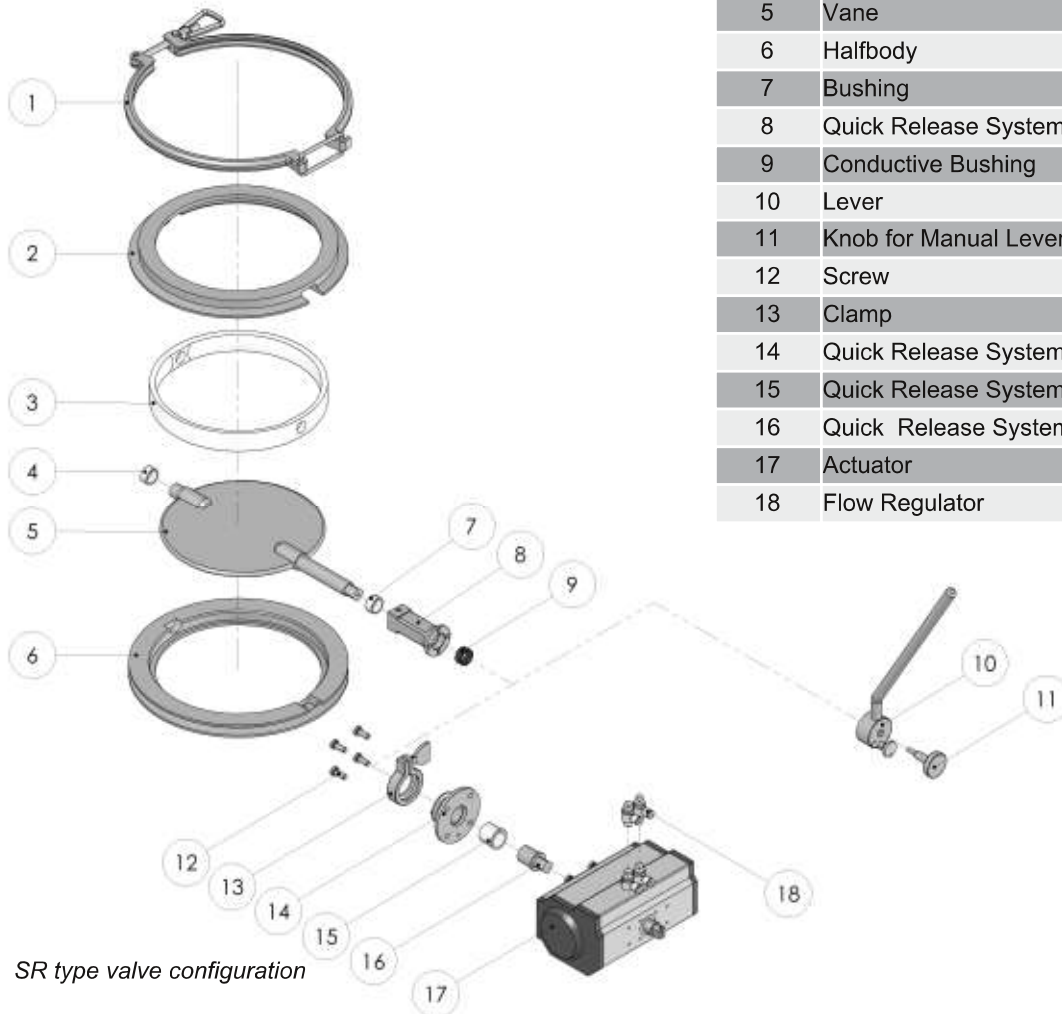
Temperature class: T4,  $T=135\text{ °C}$

The classification of the area hazards is customer's duty according to the directive 2014/34/EU. The installer has to verify the compatibility between the zone classification and the valve category. Manual valves are out of ATEX directives application scope.



	Valve Category inside	Valve Category outside	Process Zone (inside)		
			1/20	1/21	2/22
A	2G, 1D	2G,2D	✓	✓	✓
B	2G, 1D	3GD	✓	✓	✓
C	2GD	2GD	✗	✓	✓
D	2GD	3GD	✗	✓	✓
F	3GD	3GD	✗	✗	✓

## EXPLODED VIEW



Item #	Description
1	Clamp
2	Halfbody
3	Gasket
4	Bushing
5	Vane
6	Halfbody
7	Bushing
8	Quick Release System support
9	Conductive Bushing
10	Lever
11	Knob for Manual Lever
12	Screw
13	Clamp
14	Quick Release System Hub
15	Quick Release System Bushing
16	Quick Release System Adapter
17	Actuator
18	Flow Regulator

### WEAR PARTS

ND [mm]	Gasket Materials					
	Silicone	USP Class VI Silicone	White EPDM	Antistatic black EPDM	FKM	PTFE
80	✓	✓	✓	✓	✓	✓
100	✓	✓	✓	✓	✓	✓
150	✓	✓	✓	✓	✓	✓
200	✓	✓	✓	✓	✓	✓
250	✓	✓	✓	✓	✓	✓
300	✓	✓	✓	✓	✓	✓
350	✓	*	*	✓	*	*
400	✓	✓	✓	✓	✓	*

\* = Available upon request

Note: Wear parts listed above refer to the standard valve configuration. We recommend to check the valve manual before ordering or to contact sales department.

It is advisable to replace the wear parts after 18 months from purchase. Watch the assembly and disassembly video

### QUALITY ASSURANCE

This product has been manufactured in compliance with the rules established by the Quality Management System ISO 9001 : 2015 rated by Bureau Veritas Italy S.p.A. and covered by certificate No. IT268312.



Each valve is designed, manufactured, tested and individually packed in our facilities in Lucca (Italy). The serial number and the SteriValves logo is then etched on the valve to guarantee the manufacturing quality and the traceability.

The information included in this document is provided «as is».  
The information may be changed at any time without prior notice.



Via Enrico Mattei, 293/N-55100 Lucca, Italy  
T+39 0583 440560 F+39 0583 440559  
VAT IT01722430467  
[www.sterivalves.eu](http://www.sterivalves.eu)



**RAM UNIVERSAL LTD.**  
Pressure | Temperature | Flow

Broughton Astley, Leicestershire, UK LE9 6TU  
Tel: 00 44 1455 285428  
Email: [sales@ramuniversal.co.uk](mailto:sales@ramuniversal.co.uk)

