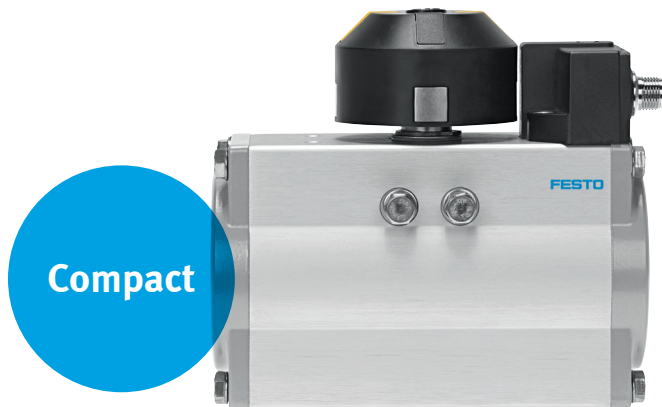


Sensor box SRBG

FESTO



Space-saving dual sensor

Highlights

- Inductive dual sensor
- Direct mounting on quarter turn actuators
- Compact and sturdy
- M12 plug connector or terminal rail connection
- PNP, NAMUR, 2-wire DC, AS-Interface switching outputs
- cULus Listed, General Purpose
- Intrinsically safe versions to ATEX and SIL 2 to IEC 61508

The new sensor box SRBG is a compact and cost-effective solution when it comes to optical position indication and electrical position of automated or manually actuated process valves. They can be easily and directly mounted without accessories, and require minimal space.

Fast and simple mounting and commissioning

Direct mounting on quarter turn actuators with a mounting interface to VDI/VDE 3845 does away with the need for adjustment – thanks to fixed mounting holes in the sensor housing. Two actuating element sizes are sufficient for position sensing, regardless of the size of the actuator and its direction of rotation.

Very flexible: suitable for many mounting situations

Wide range of electrical connection options thanks to a choice of versions with M12 plug connector or terminal compartment. SRBG-...-M12 offers a space-saving and compact sensor connection via an M12 plug connector. SRBG-...-C2 offers a terminal compartment for

sensor and solenoid valve connections. This reduces the installation effort required and the wiring costs, since the a solenoid valve can be powered directly via the sensor connection.

A further plus: in addition to various PNP, NAMUR and 2-wire DC switching outputs, versions with AS-Interface for easy and cost-effective networking of sensors and solenoid valves are also available.

Reliable operation

Thanks to clear LED indication for the switching status, supply voltage and solenoid valve output. The intrinsically safe variants are certified to ATEX for zone 1 and SIL 2.

Sensor box SRBG



SRBG- ... -M12

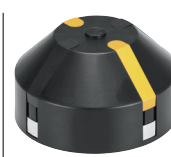


SRBG- ... -C2

| General characteristics | | |
|---|--|---------------------------|
| Measuring principle | Inductive dual sensor | |
| Mounting | Direct mounting on quarter turn actuators with interface to VDI/VDE 3845 | |
| Electrical connection | M12 plug connector | Terminal compartment |
| Solenoid valve connection | M12 socket (AS-Interface version) | Terminal compartment |
| Switching outputs | PNP NAMUR 2-wire DC AS-Interface | PNP NAMUR 2-wire DC |
| Operating and environmental conditions | | |
| Housing protection class | IP67 | |
| ATEX ignition protection type | II 1G Ex ia IIC T6 (NAMUR version) | |
| Safety Integrity Level [SIL] to IEC 61508 | Up to SIL 2 (NAMUR version) | |
| Approval | cULus Listed, General Purpose | |
| Ambient temperature [°C] | -25 ... +70 -25 ... +100 (NAMUR version) | |
| Information on materials | | |
| Housing | PBT | |
| Screws | Stainless steel | |



SASF-S2-B-F-A34



SASF-S2-B-F-A56

| General characteristics | | |
|--|---|-----------|
| Activating elements | 4 activating elements fixed at an offset of 90° for actuators with anticlockwise and clockwise rotation | |
| Mounting hole pattern [mm] | 80x30 | 30x130 |
| Shaft height [mm] | 20 and 30 | 30 and 50 |
| Operating and environmental conditions | | |
| ATEX | II 1G | |
| Ambient temperature [°C] | -25 ... +70 | |
| Information on materials | | |
| Housing | PA | |
| Actuating lug | Stainless steel | |
| Screws | Stainless steel | |