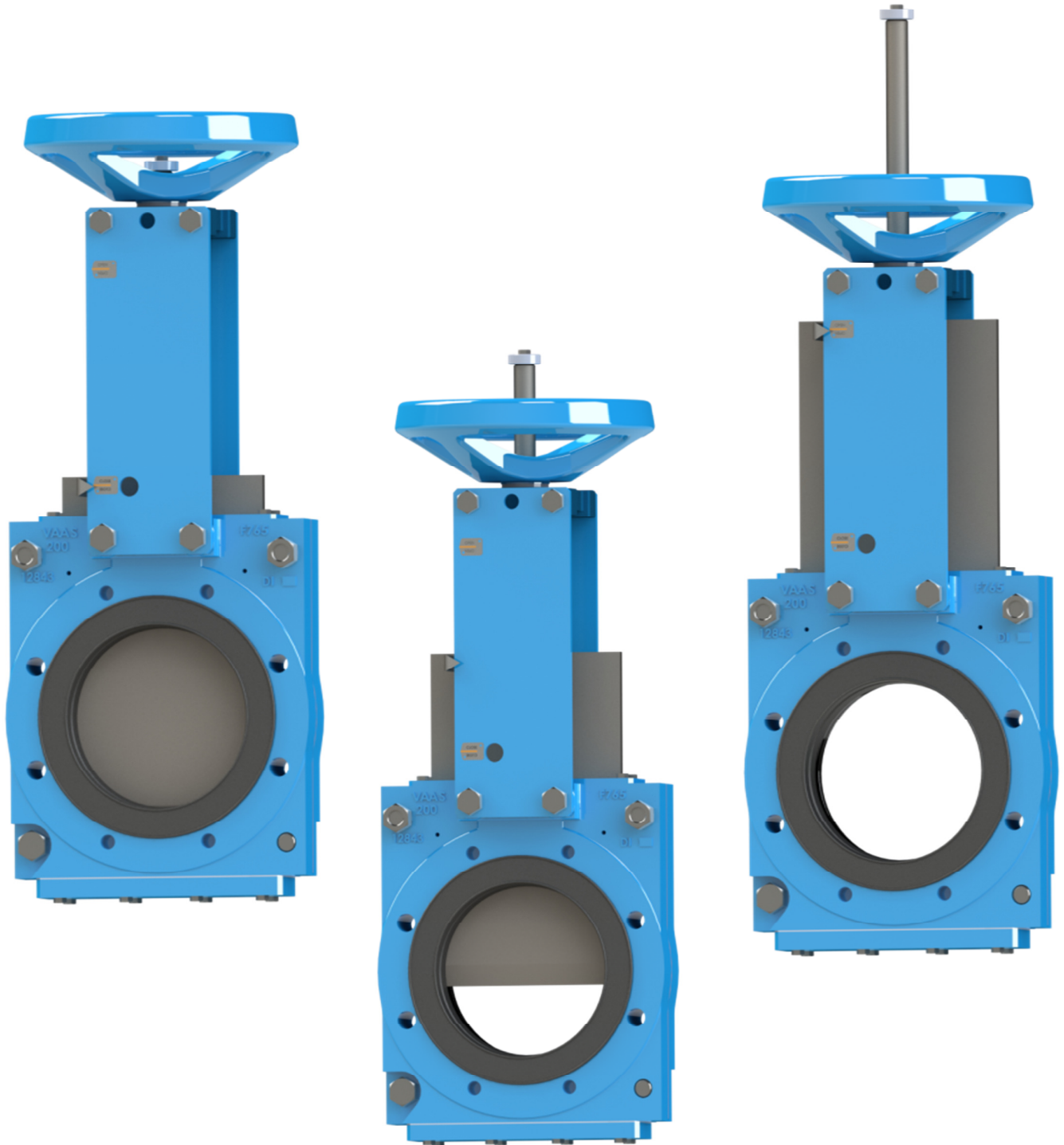


VAAS

FIG 765 Wafer Slurry Knife Gate Valve



Product Features

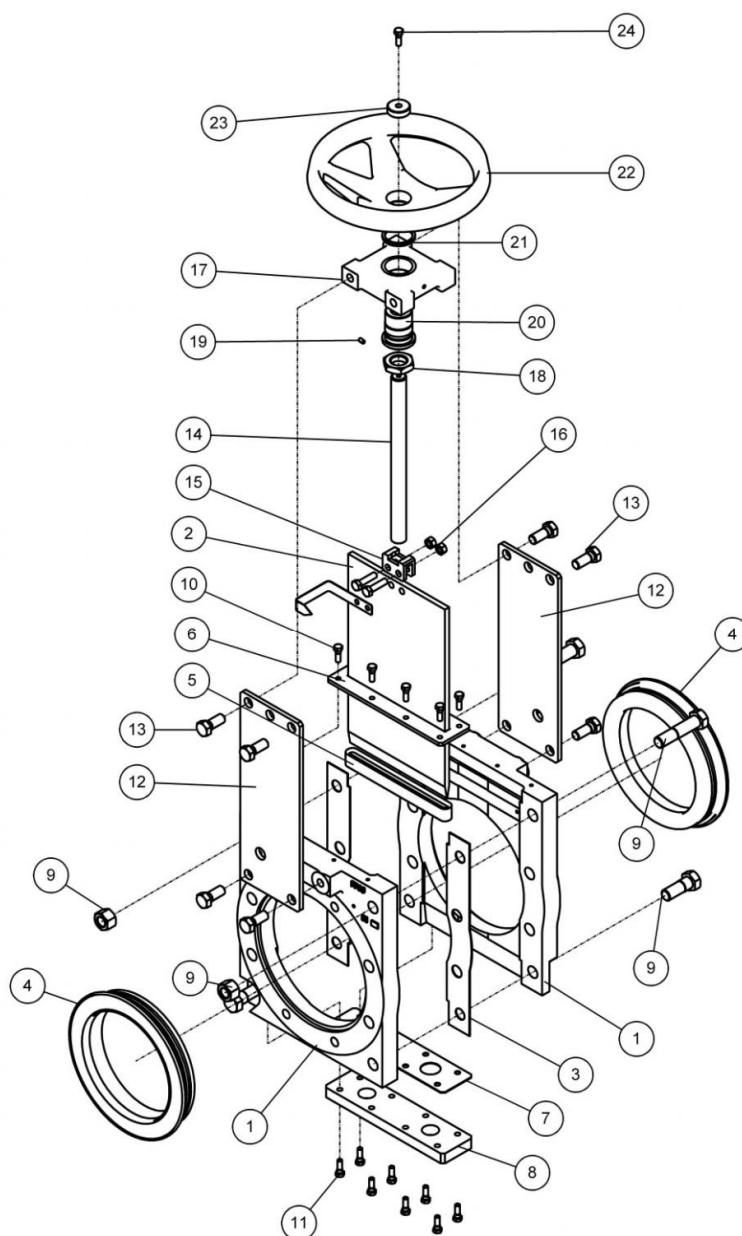
- 100 percent Bubble-tight shut-off .
 - Two piece sleeve provides bidirectional flow and shut-off.
 - Full port design, minimizes pressure drop across valve.
 - No seat cavity where solids can collect and prevent full gate closure.
 - Self-adjusting secondary seal.
 - No metal parts in contact with the flowing media in the position.
 - Adaptable yoke design featuring a removal stem nut, can be field modified to an air cylinder or bevel gear in the field without welding.
 - Body housing drilled and tapped to match ASME B16.5 / 150 flanges as standard.
- Optional Drilling PN10 or PN16.

Technical Data

Size Range	: 50 to 600 mm (2" to 24")
Standard Pressure Ratings	: DN 50 to 400 mm rated to 10 bar (2" to 16" rated to 150 psi CWP) DN 450 to 600 mm rated to 6 bar (18" to 24" rated to 90 psi CWP)
Optional Pressure Ratings	: Available. Please call factory.
Sleeve	: Natural Rubber standard
Temperatures	: Standard sleeve rated to 80°C (176°F) Other elastomer selection available, NBR, EPDM etc. please call factory for other available options

Typical Application

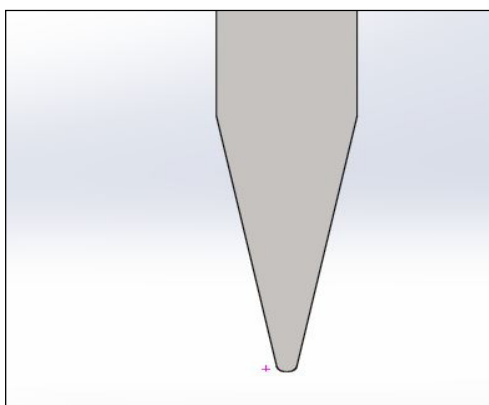
- Mining
- Pulp and paper
- Power plant
- Cement plant
- Chemical plant
- Alumina
- Phosphate
- Coal washeries



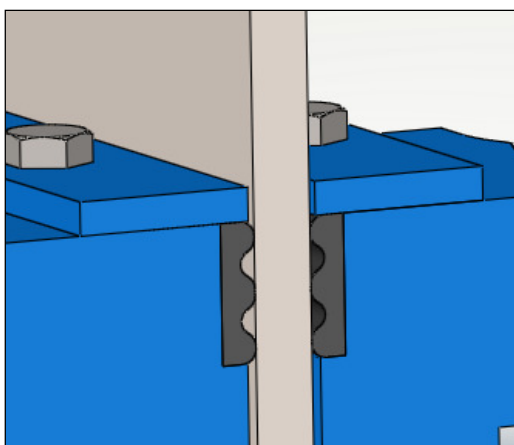
EXPLODED VIEW



SEAT



GATE



SECONDARY SEAL

ITEM NO.	DESCRIPTION	MATERIAL
1	Body	Ductile Iron
2	Gate	Stainless Steel SS 316 / SS 304
3	Body gasket	Natural rubber
4	Seat	Natural rubber
5	Secondary seal	Natural rubber
6	Secondary seal retainer	Carbon steel
7	Drain plate gasket	Natural rubber
8	Drain plate	Carbon steel
9	Body mounting fasteners	Plated steel
10	Secondary seal retainer fasteners	Plated steel
11	Drain plate fasteners	Plated steel
12	Side plate	Carbon steel
13	Side plate fasteners	Plated steel
14	Stem	Stainless steel
15	Clevis	Stainless steel
16	Clevis fasteners	Plated steel
17	Collar	Ductile iron
18	Lock nut	Carbon steel
19	Grub screw	Plated steel
20	Yoke sleeve	Aluminum Bronze
21	Thrust washers	Aluminum Bronze
22	Hand wheel	Cast iron
23	Stopper	Stainless steel
24	Stopper fasteners	Stainless steel

Actuator

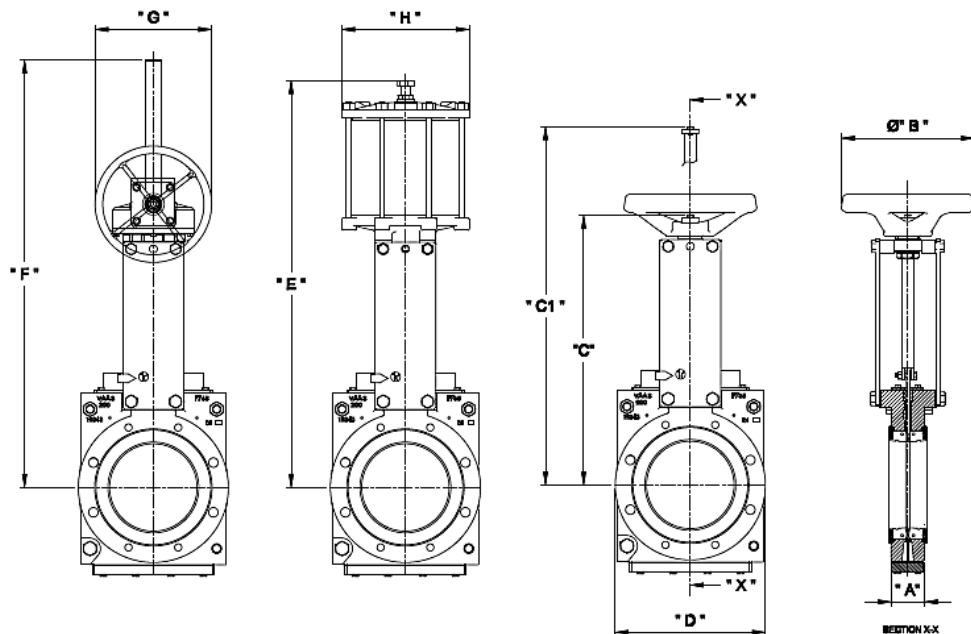
- Hand wheels
- Chain wheels
- Bevel gears
- Pneumatic cylinders
- Hydraulic cylinders
- Electric motors

Accessories

A variety of accessories are offered as standard, including hand wheel extensions, floor stands and a variety of cylinder actuator accessories for customizing the valve/actuator package to meet specific application requirements.

Body options for purging and flushing of solid media

- Drain plates are provided as standard for purging of large solids and higher concentration solids.
- Drain pan option protects against discharged fluids from the valve during opening and closing cycle that can be continuously cleaned.



Valve size	A	A1	B	C	C1	D	E	F	G	H
2	54.1 2.13	57.2 2.25	304.8 12.0	335.0 13.2	450.0 17.7	165.0 6.5	505.0 19.9	—	—	C4
3	57.2 2.25	62.0 2.44	304.8 12.0	410.0 16.1	586.0 23.1	200.0 7.9	595.0 23.4	—	—	C6
4	57.2 2.25	62.0 2.44	304.8 12.0	490.0 19.3	647.0 25.4	230.0 7.8	693.0 27.2	—	—	C6
6	63.1 2.50	68.1 2.68	406.0 16.0	590.0 23.2	825.0 32.4	285.0 9.1	820.0 32.3	900.0 35.4	500.0 20.0	C8
8	76.2 3.00	81.0 3.19	508.0 20.0	705.0 27.7	900.0 35.4	345.0 13.6	995.0 39.2	1000.0 39.37	500.0 20.0	C8
10	76.2 3.00	82.6 3.25	508.0 20.0	820.0 32.3	1075 42.3	405.0 15.9	1225.0 48.2	1200.0 47.2	500.0 20.0	C10
12	82.6 3.25	88.9 3.50	—	—	—	485.0 19.1	1416.0 55.7	1275.0 50.2	500.0 20.0	C12
14	82.6 3.25	88.9 3.50	—	—	—	535.0 21.1	1526.0 60.1	1400.0 55.1	500.0 20.0	C12
16	95.3 3.75	101.6 4.00	—	—	—	600.0 23.6	1680.0 66.1	1510.0 59.4	500.0 20.0	C16
18	95.5 3.76	103.1 4.06	—	—	—	641.0 25.2	1861.0 73.2	1725.0 67.9	500.0 20.0	C16
20	120.9 4.76	130.3 5.13	—	—	—	715.0 28.1	2085.0 82.1	1875.0 73.8	500.0 20.0	C20
24	120.9 4.76	131.8 5.19	—	—	—	840.0 33.1	2408.0 94.8	2220.0 87.4	500.0 20.0	C20

**Dimensions (mm)
(inch)**

A - Installed face to face

A1 - Minimum dimensions required for installation

VAAS Head Office & Works

VAAS INDUSTRIES PVT. LTD.

No. 73, Industrial Estate, Perungudi, Chennai - 600 096. India

Tel: +91 44 4228 9500, Fax: + 91 44 4215 4708

Email: sales@vaasvalve.com, www.vaasval.com



VAAS

Catalogue No. KGV765, Rev 1, July 2013