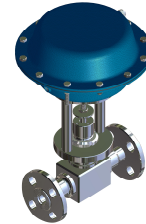
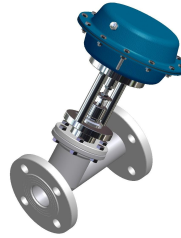
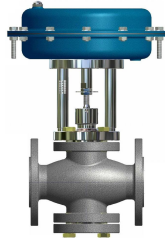


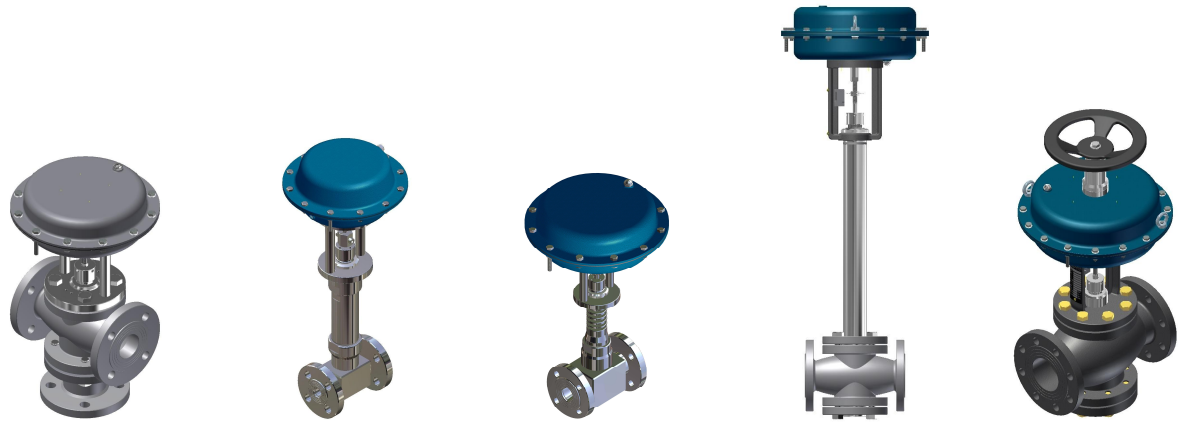


Series R Overview



Series	500	800	1000	3000	3500
Diameter	DN15-DN100	DN15-DN150 1/2" - 6"	DN8-DN150	DN6-DN25 1/4" - 1"	1/4"
Pressure rating	PN16	PN16-40 ANSI 150-300	PN16-25 ANSI 150	PN40 - 100 ANSI 150 - 600	PN40 - 100 ANSI 150 - 600
Material Valve body	GGG 40 Ductile iron	GGG 40 A216 Gr. WCB 316 (CF8M)	316 SS	316L SS	316L SS
Material Trim	316L-soft seat	316L-soft seat 316L Stellite / 17-4PH Monel / HAC	316L-soft seat 316L	316L-soft seat 316L Stellite / 17-4PH Monel / HAC	316L-soft seat 316L 17-4PH Monel / HAC
Connections	Flanges DIN	Flanges DIN-ANSI welding ends	Flanges DIN-ANSI threaded, weld, clamp	Flanges DIN-ANSI threaded, weld, clamp	Threaded, weld
C_v^1	4- 160	0,1- 300	4- 490	0,01- 12	0,01- 0,3
Description	"General service" control valves with ductile iron valve body. Used for liquids, gasses and steam up to 16 bar (steam up to 13 bar)	"Heavy duty" control valves. Used for all media in a wide temperature range.	"Free flow" control valves with a high capacity. Standard with 316 stainless steel valve bodies.	"Low flow" control valves in 316L stainless steel. Due to the flexible body construction the valves are easily adapted to different connections.	"Mini flow" control valves in 316 stainless steel. Standard stainless steel actuator. Very compact construction.

¹ C_v = 1.16 Kvs



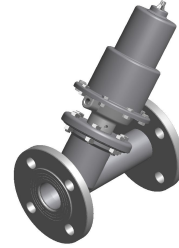
Series	3-way	Bellows seal	High Temperature	Cryogenic	Low Noise
Diameter	DN15-150 1/2"-6"	DN15-150 1/2"-6"	DN15-150 1/2"-6"	DN15-150 1/2"-6"	DN15-DN150 1/2"-6"
Pressure rating	PN16-40 ANSI 150-300	PN16-40 ANSI 150-300	PN16-40 ANSI 150-300	PN16-40 ANSI 150-300	PN16-40 ANSI 150-300
Material Valve body	GGG 40 A216 Gr. WCB 316 (CF8M)	GGG 40 A216 Gr. WCB 316 (CF8M)	GGG 40 A216 Gr. WCB 316 (CF8M)	316 SS	GGG 40 A216 Gr. WCB 316 (CF8M)
Material Trim	316L-soft seat 316L Stellite / 17-4PH	316L-soft seat 316L Stellite / 17-4PH	316L Stellite / 17-4PH Monel / HAC	316L-soft seat 316L Stellite / 17-4PH	316L Stellite / 17-4PH
Connections	Flanges DIN-ANSI threaded, weld, clamp	Flanges DIN-ANSI threaded, weld, clamp	Flanges DIN-ANSI threaded, weld, clamp	Flanges DIN-ANSI threaded, weld, clamp	Flanges DIN-ANSI threaded, weld, clamp
C_v^1	0,1- 300	0,1- 300	0,1- 300	0,1- 300	4- 300
Description	3-way control valves. Used for mixing or diverting.	Bellows seal control valves. Used for toxic or corrosive media. Also suitable for hot oil applications. Double- or triple wall bellows up to PN40. "Zero emission"	Control valves for high temperatures up to 350 °C	Control valves for cryogenic applications -196 °C. Suitable for mounting in a cold box.	Control valves with "low noise" trim for noise reduction.

¹ C_v = 1.16 Kvs

Actuators	RAM control valves are mounted with pneumatic actuators as standard. Single acting (ATO, ATC) or double acting. Optionally the actuators can be supplied in complete stainless steel.
Electric actuators	RAM control valves can be mounted with electric actuators for control or on/off purposes. (400V, 230V, 24V AC/DC) We have a close cooperation with specialized suppliers as Haselhofer, Auma, Sauter.
Valve positioners	All possible valve positioners can be mounted on the valves. From stock we supply Siemens, ABB, Eckardt, SMC and Masoneilan valve positioners. Other models on request.

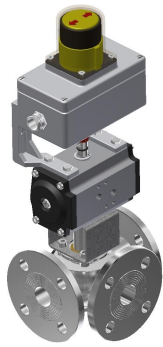


On/Off valves



900	Glass	VPOO	VPOO-3	VPF	Series
DN15-100	DN25	DN15-150 1/2"-6"	DN15-150 1/2"-6"	DN 15-DN200	Diameter
PN16	PN2,5	PN16-40 ANSI 150-300	PN16-40 ANSI 300	PN10-16-25	Pressure rating
316 SS	Borosilicate glass	GGG 40 A216 Gr. WCB 316 (CF8M)	GGG 40 A216 Gr. WCB 316 (CF8M)	316 SS	Material Valve body
316L-soft seat 316L	PTFE	316L-soft seat 316L Stellite / 17-4PH	316L-soft seat 316L Stellite / 17-4PH	316L-soft seat 316L	Material Trim
Flanges , weld, clamp, DIN11851	Special	Flanges DIN-ANSI welding ends	Flanges DIN-ANSI welding ends	Flanges DIN-ANSI threaded, weld, clamp	Connections
0,01- 300	0,1-12				C _v ¹
Sanitary control valves in 2- or 3-way body design. Suitable for applications in the foodprocessing industries.	Special control valves with a borosilicate glass body and PTFE bellows seal for extremely corrosive media.	All purpose on/off valves. Easily adapted to different applications. Cryogenic-, bellows sealed-, high temperature valves are available. High capacity piston actuator in stainless steel.	All purpose on/off valves in 2- or 3-way body design.	"Free flow" or Y-pattern on/off valves with a 316 valve body and a high capacity piston actuator in stainless steel.	Description

RAM control valves have a very short delivery time. Standard and special valves can be supplied within a couple of days.	Delivery
RAM control valves comply with all required certifications. (PED, CE, ATEX) On request we can supply the valves with certificates and tests (3.1, Helium, FDA, EHEG)	Standards
RAM valves can be mounted with accessories such as limit switches, solenoid valves, feed back modules and many more.	Accessories



Filters, check valves



Series	VSP	VSA	VM	FFL Filters	VCL check valves
Diameter	DN 3/8"-DN100	DN15-DN100	DN15-DN100	DN 1/4"-DN200	1/8" - 2"
Pressure rating	PN16-40	PN16	PN16-25	PN10-16-25	PN40
Material Valve body	316 SS	316 SS	316 SS	316 SS	316L SS
Material Trim	316L-soft seat	316L-soft seat 316L	316L-soft seat 316L	316 SS	316 SS
Connections	Flanges DIN-ANSI threaded, weld, clamp	Flanges , weld, clamp, DIN11851	Flanges DIN-ANSI threaded, weld, clamp	Flanges DIN-ANSI threaded	Threaded
C_v^1					
Description	Special ball valves machined of 316L stainless steel. 2-, 3-, 4- and 5-way body design. Also available as cryogenic ball valves.	Sanitary on/off valves in 2- or 3-way body design. Suitable for applications in the foodprocessing industries.	On/off valves with handwheel.	Filters completely produced of 316 stainless steel.	Checkvalves in 316 stainless steel. Wide range of seal materials. Opening pressure 0.25 bar.

RAM Universal Limited Cottage Lane
 Industrial Estate Broughton Astley,
 Leicestershire United Kingdom, LE9 6TU
 T: +44 (0) 1455 285428
 E: sales@ramuniversal.co.uk W:
 ramuniversal.co.uk